



Support for community energy in the Czech Republic

Ondřej Pašek

Founding member and
expert support provider for



20. 5. 2026

■ Energy communities in the Czech Republic

- legislation in place:
 - non-profit energy communities
 - energy sharing up and running
 - functional Energy Data Centre (EDC)
-
- over 150 communities established
 - 50 of them supported from the RRF
 - prosumers: 41 000 power plants + 25 000 consumers in energy sharing
 - total energy shared 80 GWh so far, mostly prosumers



■ Energy communities in the Czech Republic

BUT

- overall, missing operating aid for renewable energy sources limits the economy of energy communities
- static allocation key:
 - hinders supply / demand regulation
 - causes losses in share energy
- semifunctional EDC hinders technical development
- missing distribution costs discount for local sharing does not motivate local supply / demand chain



The valley of death

Sources of financing for energy projects



Support scheme:

Establishment of energy communities



Financováno
Evropskou unií
NextGenerationEU



NÁRODNÍ
PLÁN OBNOVY

- single call, € 40 000 total
- 55 projects supported
 - 90% subsidy
- Supported measures:
 - feasibility studies (legal, economic, technical)
 - community coordinator position
- Outcomes:
 - registration of energy community
- Eligibility criteria:
 - diversity of members: municipalities, SMEs, NGOs, households
 - diversity of RES and buildings
 - level of public support



Hnutí DUHA
Friends of the Earth Czech Republic

Establishment of energy communities



Key experience:

- cooperation of NGOs and public institutions
- no hard indicators (ie. installed kWp etc.) required
- support for personal costs key
- perfect eligibility criteria may not result in perfect results
- economic feasibility very limited given the regulatory barriers
- continuation of support for running cost missing

- first call, 40 + 40 million Euro
- investment support scheme only
- beneficiary: registered energy communities only
- public support:
 - 45 % on new RES (solar, wind, bio-CHP)
 - 30 % batteries, metering, regulation, car chargers, energy management, software
- grant / soft loan / combination
- soft loan
 - 5 - 10 years repayment
 - subsidised interest rate down to 0 %
 - no guarantee necessary (with impact on risk score though)

Investment support scheme:

Komunerg

programme of the Modernisation fund



Financováno Evropskou unií

System pro obchodování s emisemi
Modernizační fond



Ministerstvo
životního prostředí



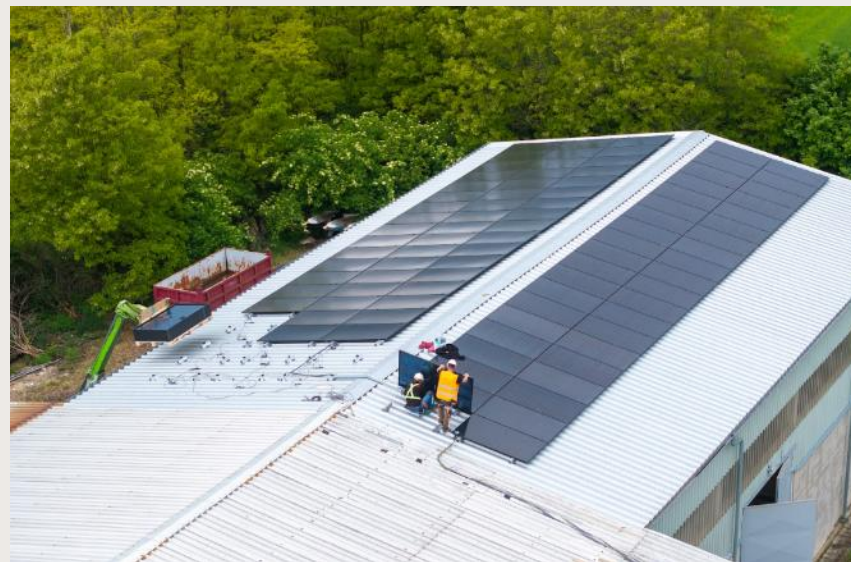
SFŽP ČR

Komunerg

programme of the Modernisation fund

Key limits:

- obligation to share 60 % of daily production every day
- lack of specific conditions for larger projects: SPV support, equity models
- no funding for project coordination or community development
- de minimis rules on non-RES investments, including batteries



Key lessons:

- investment support is needed to overcome early stage of energy communities and regulatory barriers
- investment support needs to take into account specific nature of ECs: support for coordination role needed
- how to focus public aid:
 - condition energy sharing
X artificial limits
- allow for flexibility for large scale and innovative projects

Investment support scheme:

Komunerg

programme of the Modernisation fund

Conclusions

- energy communities need public aid, especially in the first 5 years
- energy communities need both investment and running cost support to be able to deliver wide range of benefits
- innovative financial instruments can be fit for ECs, however subsidies remain key to overcome regulatory barriers and "the valley of death"
- support schemes need to be well tailored and allow for corrections
- energy communities as non-profits should have a different regime for public aid than the private, for-profit sector
- with RRF and the Modernisation fund almost over, EU funding through the NRPPs and the Social Climate Plans are key resources for further funding

Thank you for your attention,
happy to get in touch

Ondřej Pašek

public finance and energy expert of the FoE
chair of the Subsidies working group of UKEN

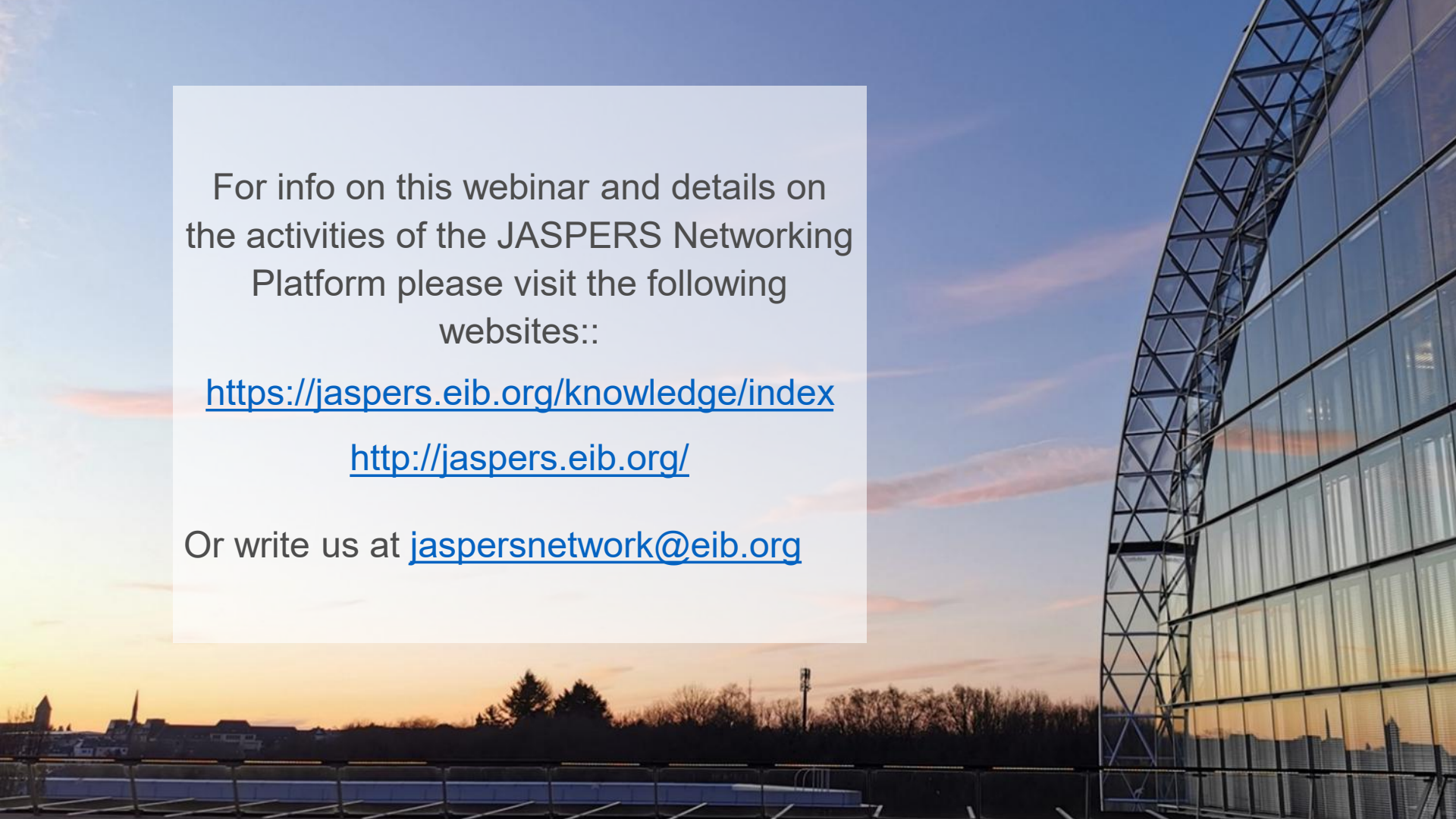
ondrej.pasek@hnutiduha.cz

+420 608 381 602



Founding member and
expert support provider for



A photograph of a modern glass skyscraper at sunset. The building's curved facade and steel framework are visible on the right side. The sky is a mix of blue and orange, with a city skyline reflected in the glass. In the foreground, there's a rooftop area with a railing and some trees in the distance.

For info on this webinar and details on the activities of the JASPERS Networking Platform please visit the following websites::

<https://jaspers.eib.org/knowledge/index>

<http://jaspers.eib.org/>

Or write us at jaspersnetwork@eib.org