



Financiación y Asesoría en Desarrollo Urbano

Seminario sobre Orientaciones Técnicas Cambio Climático UE

Infraestructuras de residuo y reciclaje

29 Octubre 2025

EIB Group 2024-2027 Strategic Roadmap [link](#)

1

The role of the EIB Group as “The Climate Bank”

2

Digitalization & deployment of the whole value chain of new technologies

3

Support to Europe’s security and defence industry

4

Contribute to a modern cohesion policy

5

Support agriculture and the bio-economy

6

Reinforce Europe’s social infrastructures

7

Focus on high impact investments outside the EU

8

Pioneer the Capital Markets Union

Key role for cities

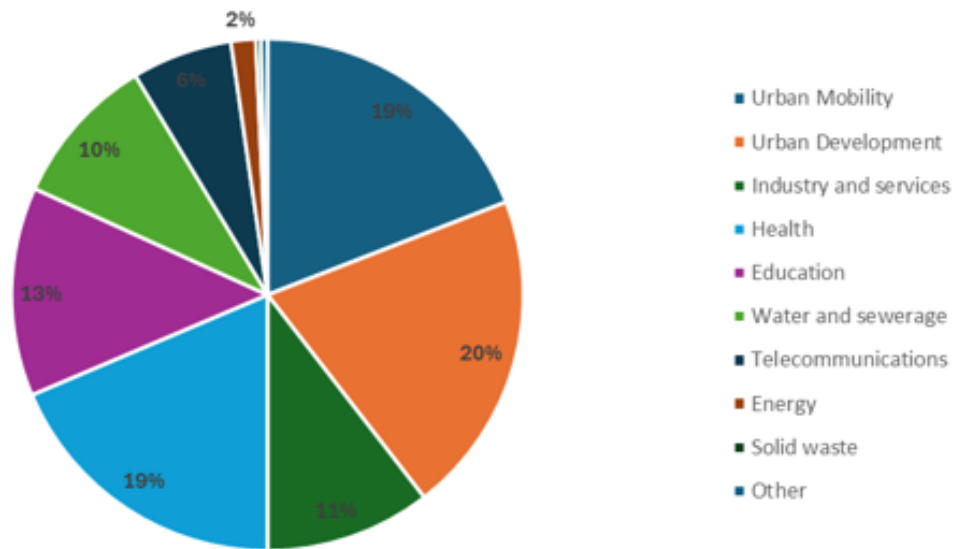
NEW flagship initiatives:

- SME energy efficiency programme
- Strategic Tech-EU, incl. extension of European **Tech Champions** initiative
- **NEW water** programme
- Pan-European **agriculture** programme
- **Pan-European investment platform for affordable and sustainable housing**

The EIB: Urban lending in 2024

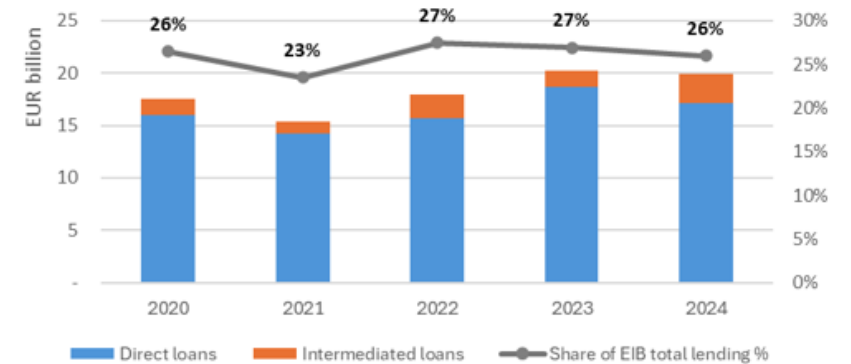
- ▶ EUR **19.9 billion** in urban lending – supporting 304 operations
- ▶ EIB urban lending represented **26%** of total EIB lending signed in 2024 (EUR 76.6 bn).
- ▶ In 2024, **86%** of the EIB urban lending volume was signed directly with project promoters and cities, while 14% was channelled to investments through intermediaries (e.g. commercial or promotional banks).

EIB Urban lending by sector, 2020-2024, EUR 90.9 bn in total



- ▶ **Over 79%** of EIB direct urban lending contributed to the EIB Climate Action and Environmental Sustainability.
- ▶ EIB urban lending in 2024 was dedicated primarily to **EU countries (92%, EUR 18.3 bn)**

EIB urban lending (direct and intermediated), total in 2020-2024: EUR 90.9 bn



EIB climate finance in 2020-2024



- EIB total climate finance (EUR 172.8 bn)
- of that: contribution of urban projects (EUR 58.5 bn)

EIB Financing Tools for the Urban Sector

DIRECT PROJECT INVESTMENT



INVESTMENT VIA INTERMEDIARIES

Instrument	Key Features
Investment Loans	<ul style="list-style-type: none"> • Direct loan for a specific investment project or programme • Usually with an equal or larger than EUR 100m project cost • All investment components identified / appraised up front
Framework Loans (FL) direct to a City	<ul style="list-style-type: none"> • Loan to a city, usually > 75,000 people, > EUR 100m • Finances a 3-5 year investment programme • Multi-sector investments (> EUR 1-2 million) meeting defined criteria but not finally prepared at time of signing
FL via an Intermediary	<ul style="list-style-type: none"> • Facility for financing smaller municipalities • Relies on a good intermediary which applies financing criteria agreed with EIB
Equity Funds	<ul style="list-style-type: none"> • Investment into an urban development, infrastructure fund or brownfield fund • Targeted investment criteria leading to new investment

EIB ADVICE HELPS CITIES LEVERAGE INVESTMENT:

1) EIB urban investment

- Project investment loans for cities, private/public service providers
- Framework loans to finance multi-project & multi-sector urban investment programmes
- Intermediated loans via NPBs, commercial banks, or urban agencies
- Investment funds for urban regeneration

2) Co-financing with EU funding

- EU infrastructure grant funding via ESIF
- EU funding via financial instruments
- Investments under the InvestEU framework
- Specific EU facilities (eg. under the Just Transition Fund)

3) Co-financing by other MDBs and banks

- Financing alongside or via NPBs, municipal banks, commercial banks active in municipal finance
- Co-financing with other IFIs, MDBs – especially outside EU

4) National public and private co-financing

- Investment by municipalities
- Co-investment into loan or equity investment funds
- Financing under project finance / PPP structures

AND SOMETIMES... A MIX OF ALL TYPES OF CO-FINANCING



EIB ADVISORY SUPPORT THROUGHOUT THE PROJECT CYCLE

From an enabling environment...



UPSTREAM

- Policy & programme development support
- Preliminary project assessment



...through preparation and planning...



PREPARATION

- Technical advice
- Financial advice incl. structuring and PPPs
- Selection & supervision of consultants



... to high quality (large / smaller) projects on the ground



IMPLEMENTATION


- Advice on project implementation
- Enhanced monitoring

CAPACITY BUILDING

Knowledge-sharing on technical / financial issues – Practitioner communities and resources - Dissemination of best practices & case studies

How do we Engage?

With counterparts (National/Municipal Counterpart):

- 
- Large Projects:** Direct technical support to project teams and the project promoter
 - Project Packages:** Direct technical support to Project Teams, in addition to the coordinator of relevant programmes
 - Horizontal Actions:** Technical Guidance, Policy Development, Management Systems, Programme Support, Training
 - Capacity building:** Webinars, Workshops, Consultations

EIB Advisory - urban– KEY programs

Advisory Programme	Key Features	Funding / Partners
InvestEU Advisory Hub	<ul style="list-style-type: none"> • Support for sustainable infrastructure, social infrastructure • Targets support for projects linked to potential EIB lending • Includes ADAPT+, EMBRACE, C3, Fi compass advisory platforms • Website: https://advisory.eib.org/about/the-hub 	<ul style="list-style-type: none"> • EC – DG ECFIN • EC – DG REGIO, DG MOVE, DG ENERGY, DG RTD
Fi-compass	<ul style="list-style-type: none"> • Support set up financial instruments • Dissemination and training for financial instruments • fi-compass Financial instruments under EU shared management 	<ul style="list-style-type: none"> • EC – DG REGIO, AGRI, EMPLOYMENT...
ELENA	<ul style="list-style-type: none"> • Dedicated instrument to support energy efficiency and cleaner transport • Support repaid if investment fails to meet the applicable leverage • Website: https://www.eib.org/en/products/advisory-services/elena/index 	<ul style="list-style-type: none"> • DG ENERGY, DG MOVE, DG RTD
JASPERS	<ul style="list-style-type: none"> • Support for projects, tackling investment barriers and capacity building • Organized via country programs • Advisory must be linked to potential or ongoing EU investment • Website: http://jaspers.eib.org/ 	<ul style="list-style-type: none"> • EC – DG REGIO, DG MOVE, DG NEAR

Solid waste: Horizontal Assignments

- Support in **setting up guiding principles for solid waste eligibility**, in 2021-2027 Cohesion Policy
- **Technical capacity building** for the Managing Authority (MA) and beneficiaries of the waste projects
- Support for **updating National Waste Management Plans** (NWMP)

Support in setting up guiding principles for eligibility

- **Integrated Waste Treatment Facility (IWTF)** - all technical conditions and grant calculation methodology agreed with DG REGIO and DG ENV included in the Applicant Guide
- **Separate collection plan** (minimum requirements included in the Applicant Guide) – eligibility criteria for all new waste projects
- **Identification of the legislative changes and additions** necessary to ensure a proper implementation and operation of the projects

Technical capacity building for Managing Authority and beneficiaries

Main objectives



Improve quality of waste projects and compliance with EU & national planning and strategic documents and legislation

- **Improve follow-up on lessons learned** and relevant knowledge transfer
- **Improve knowledge and technical capacity of MA and beneficiaries** on project preparation

- **Knowledge transfer to Managing Authority and the beneficiaries** on preparing:

- **demand analysis (DA)**
- **cost-benefit analysis (CBA)**
- **climate proofing**

Specific objective



in line with EU guidance documents, SDP requirements and eligibility rules

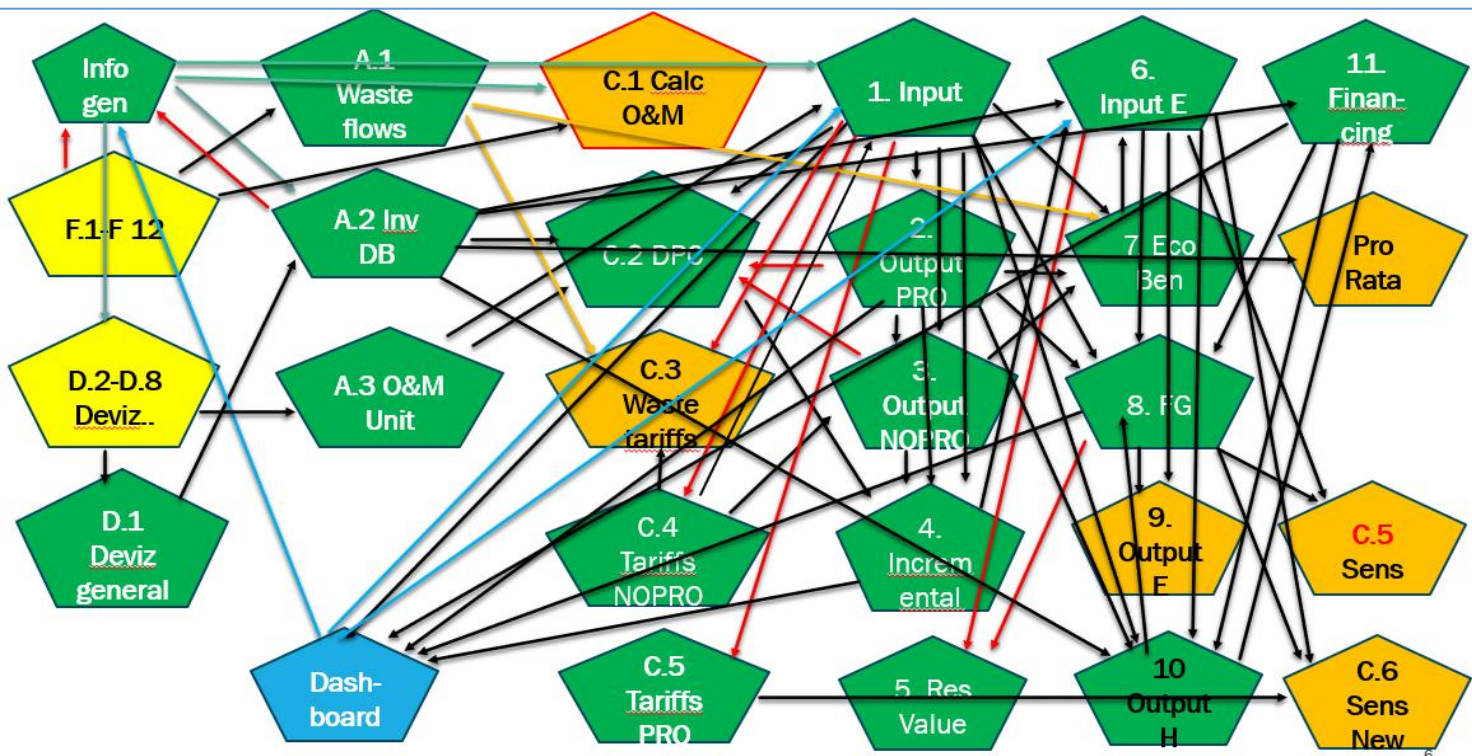
Technical capacity building for MA and beneficiaries

**Model for DA and CBA
(incl. GHG calculations)**



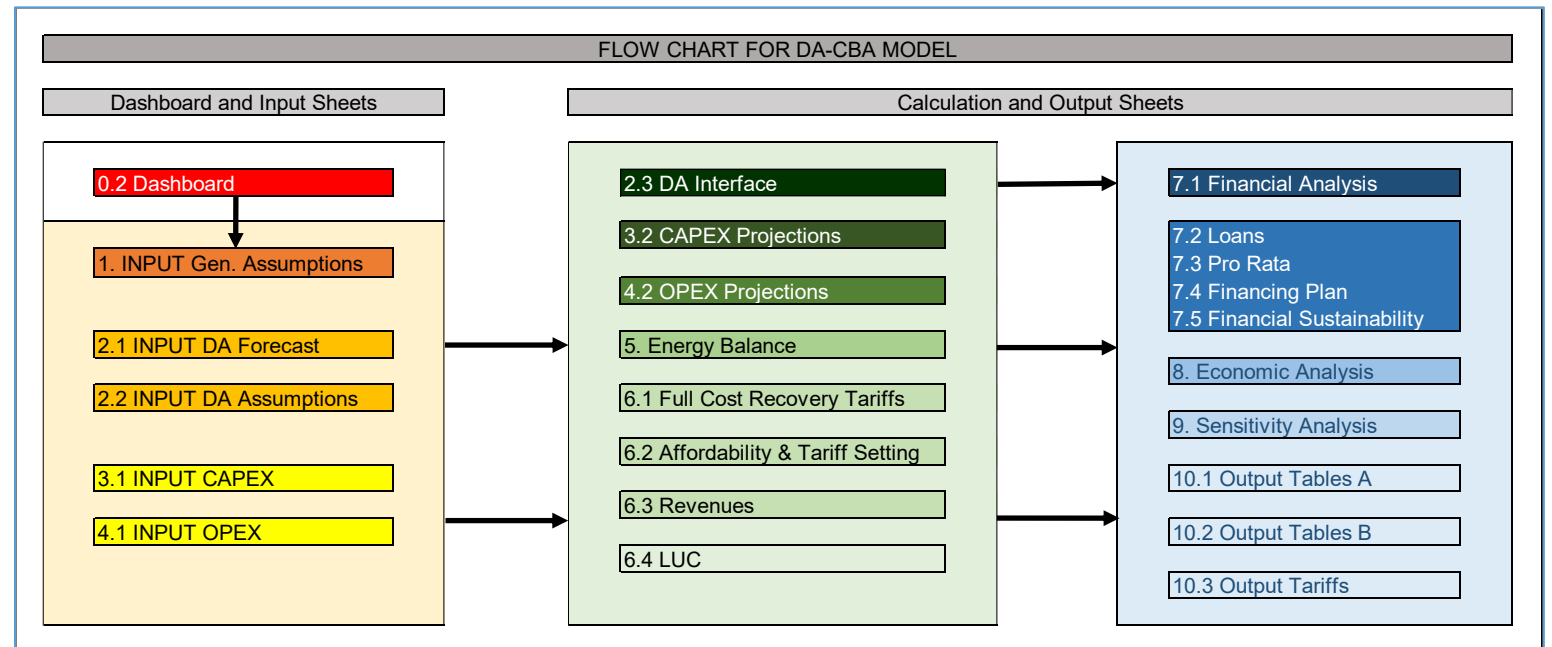
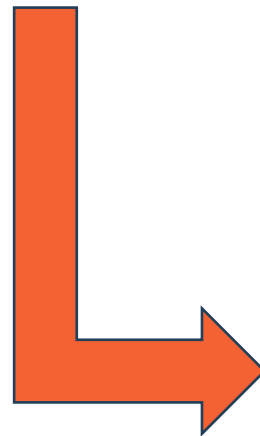
Specific objectives

- **Development of a DA and CBA standard model**
- **Optimization of DA and CBA model design** to improve user friendliness
- **Methodological consistency** with relevant **EC guidance documents**
- **Format standardization** used in the model spreadsheets
- **Overall model simplification**, e.g. demand analysis, economic analysis, GHG emissions
- **Consideration of all type of eligible investments**
- Climate proofing module under preparation



Old DA-CBA model

New DA-CBA model



Support for updating the National Waste Management Plans



Support to the Ministry

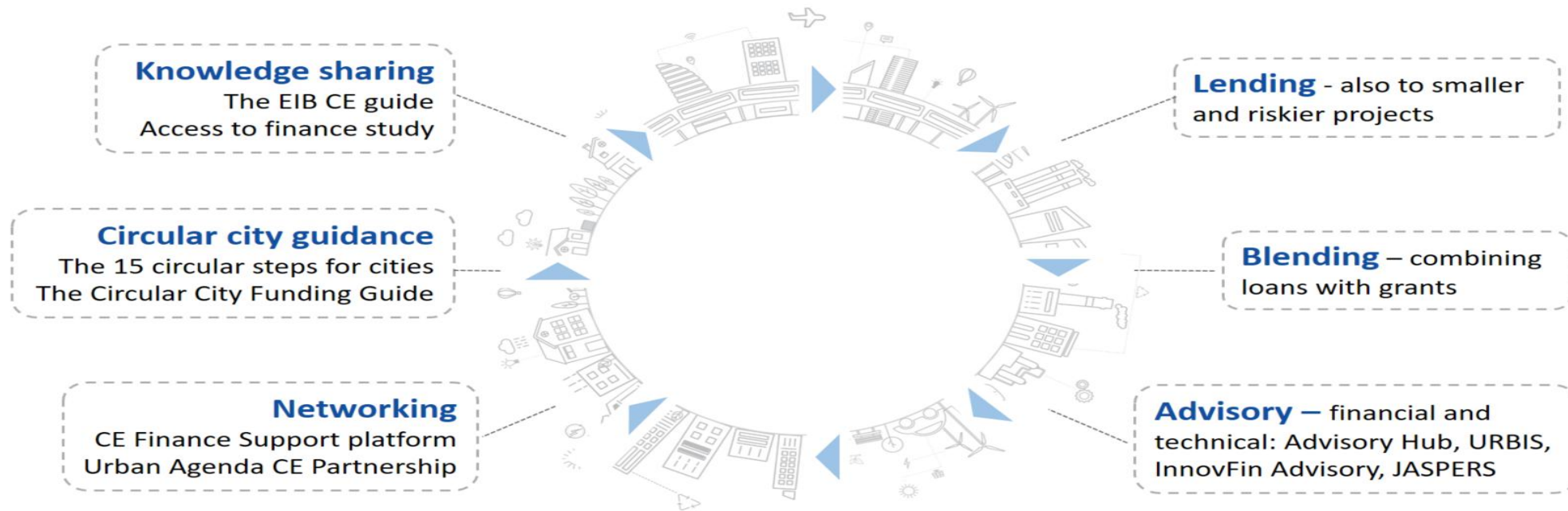
- In line with:
 - **Existing EU and national legislation** and all the objectives and targets of the **Circular Economy Package**
 - **Enabling condition 2.6.** *Updated planning for waste management applicable to the ERDF and Cohesion Fund specific objective: Promoting the transition to a circular and resource efficient economy*
 - **Waste Management Plans** adopted
 - **Technical eligibility conditions** for the projects to be financed through SDP
- **Methodology for the preparation of updated waste management plans**



EC/EIB support to Circular Cities



EIB support to circular cities



The Circular City Centre - C3

Supporting cities in their circular transition

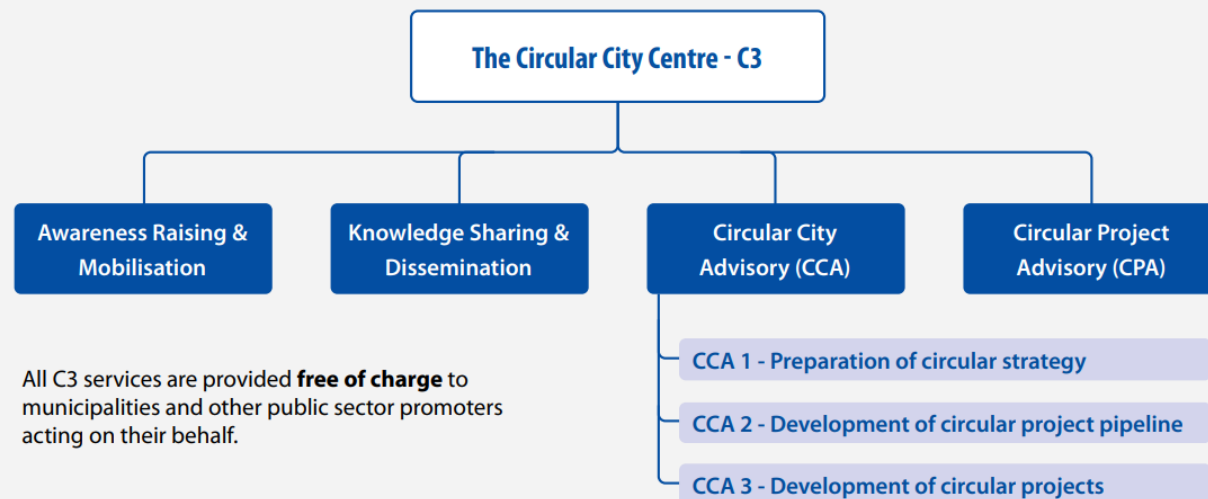


The Circular City Centre - C3 is a **competence and resource centre** within the European Investment Bank (EIB) that supports EU cities in their **transition to a circular economy**.

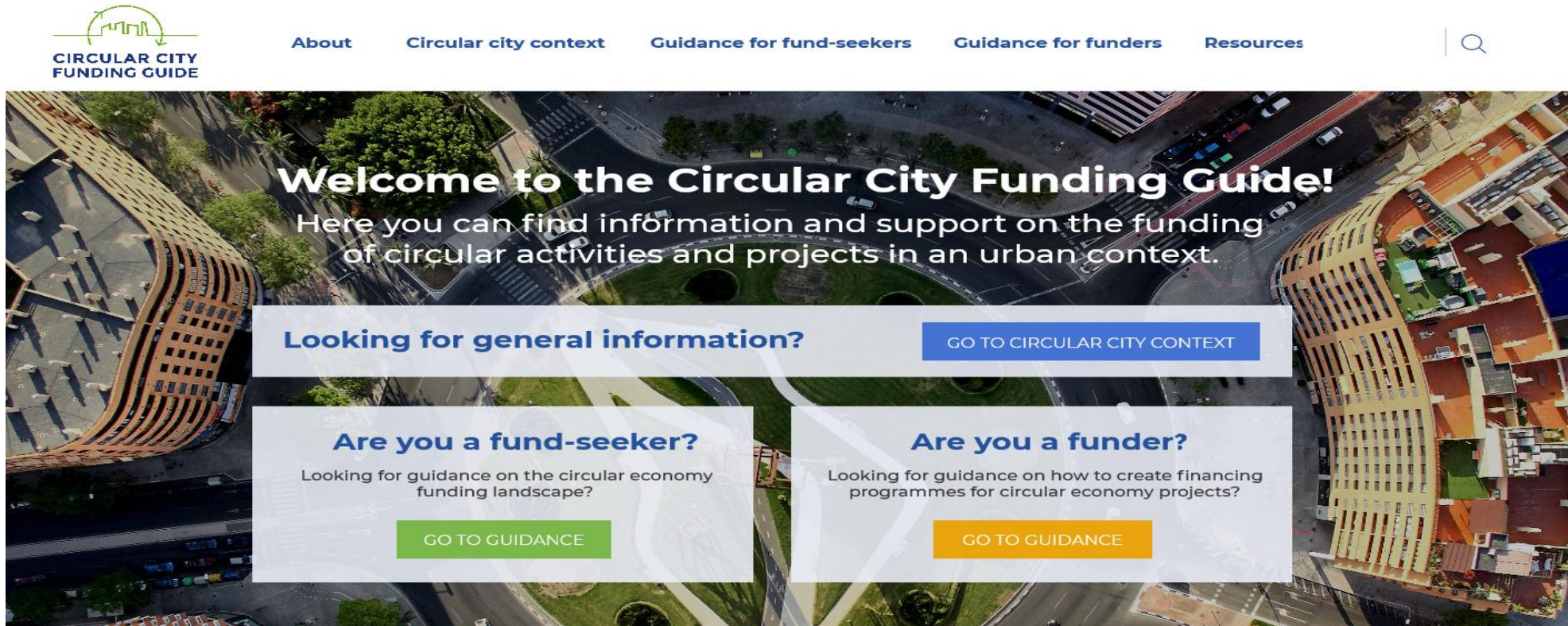
Recognising the role of cities as cradles and catalysts of circular action and change, C3 helps cities **make circular progress** and **identify and prepare impactful circular projects** for financing.

The C3 initiative is funded under the InvestEU Advisory Hub.

C3 supports cities in four different ways:



Circular City Funding Guide – a tool to increase access to circular funding



An EIB supported action under the Urban Agenda Partnership on Circular Economy

The EU Climate Neutral Cities Advisory support & Lending Envelope

- Partnership with the EC to support 112 Climate Neutral and Smart Cities – Advisory and Financing support
- **EUR 2 billion** “umbrella” facility to support EU CNC Cities striving to achieve climate neutrality by 2030.
- Priority sectors are **sustainable urban renewal and regeneration, sustainable mobility and energy efficiency.**
- Sub-operations will also be addressing **social Infrastructure** (schools, social and affordable housing, health facilities, etc.), **waste management, water, wastewater and flood management, energy transition/energy networks, modernization of urban roads and ICT systems** (digitalisation, etc).
- Approved operations with **LEUVEN (EIB loan of MEUR 150), PORTO (loan of MEUR 200) and BARCELONA (loan of MEUR 275).**
- Operations under appraisal with **Lyon (FR), Thessaloniki (GR), Nantes (FR) and Tampere (FI) and Barcelona (ES).**



THANK YOU

For more information:

Alberto Gonzalez:

a.gonzalezsanchez@eib.org

EIB Advisory Coordinator for Spain

Ioanna Kourti: i.kourti@eib.org

Senior Climate Change expert

Luis Hebrero: l.hebrero@eib.org

Head of Division

Housing, Cities & Regions Advisory



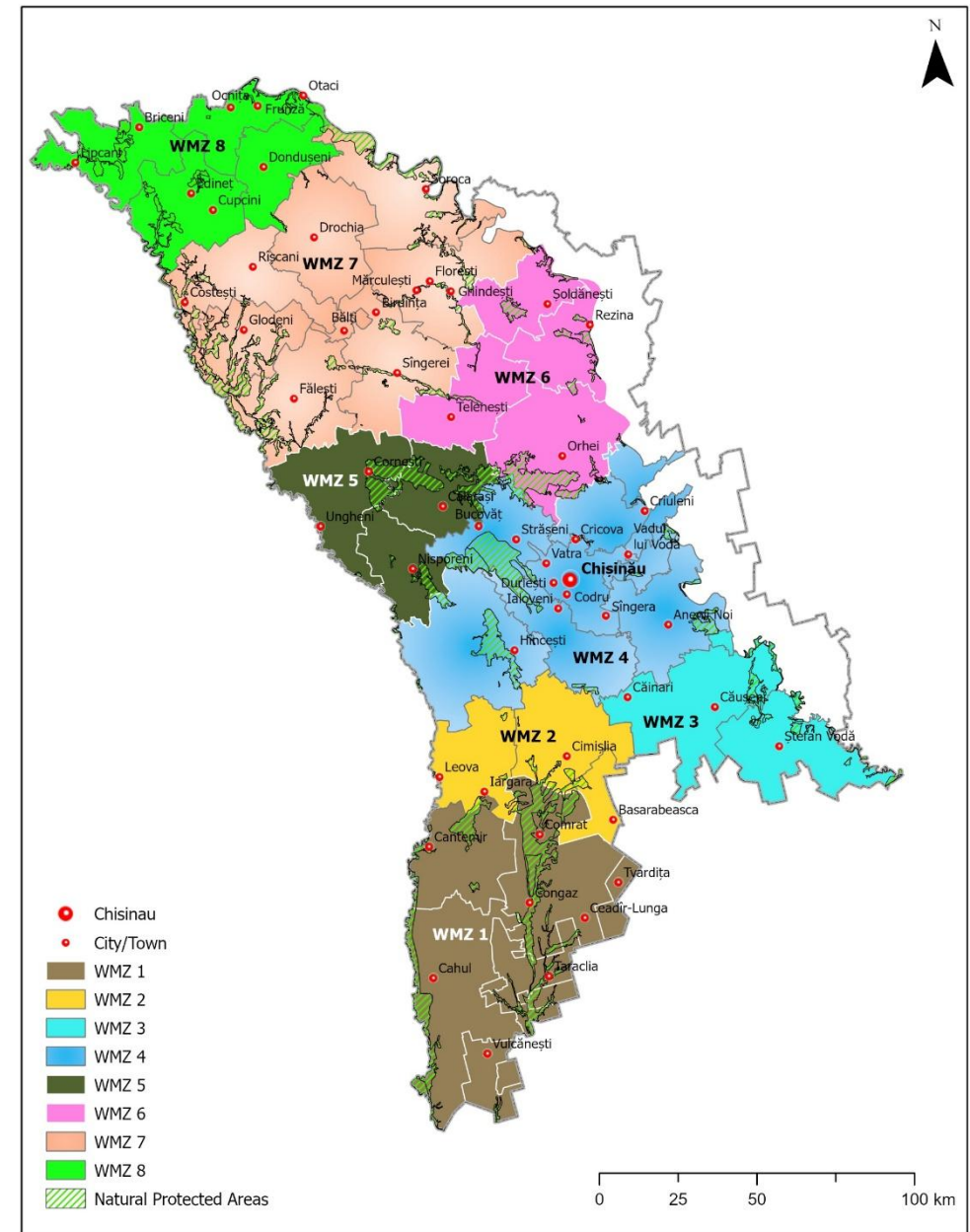
BACKUP: EXAMPLES

Solid waste in Moldova

The Project concerns the implementation of **solid waste sector sub-projects throughout Moldova**, supporting the implementation of the **Waste Management Strategy of the Republic of Moldova (NWMS)**

EIB's Board of Directors approved EUR 100m financing for the Project (initial estimation of the total cost of EUR 200m)

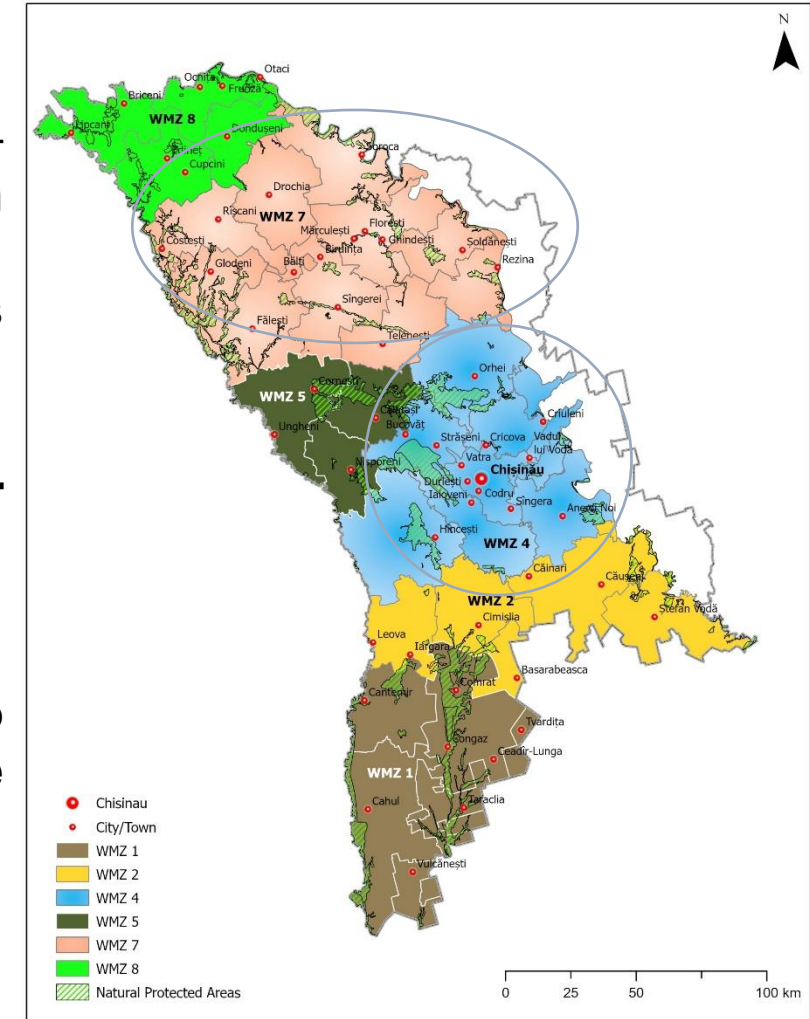
NWMS foresees 8 Integrated Waste Management Systems (IWMSs) in 8 Waste Management Zones (WMZs) = **8 sub-projects** with an initial total estimated cost of EUR 200 m.



Initial WMZs according to the NWMS

Project implementation

- **2023-2024 – technical assistance services** (Ramboll South East Europe S.R.L.)
 - Status assessment in the three zones
 - Assess the regrouping the three zones into two zones – recommendation on regrouping accepted (Law on waste amended in December 2024 to reflect the new zones)
 - Assist the Ministry in identifying the sites – majority of the sites identified
- **Options for integrating the Chisinau sub-project into another zone** – at the end 2024, Chisinau municipality accepted the integration and made available the site for the waste treatment infrastructure
- **2025** - through the EU4U Advisory Programme, **EIB hired two experts to provide support in identifying the additional sites and to monitor the progress** made by the Local Public Authorities regarding the delimitation, registration, and change of land use
- **Preparation of the Feasibility Studies for the sub-projects**



Current WMZs

Example Advisory Hub assignments



Climate mitigation and resilience to natural disasters

Project preparation support for “Athens Resilient City: Climate Mitigation”, within the framework of the URBIS initiative



Cleaner Buses in BG, HU and FR

The Hub’s technical assistance is helping the city decide on options to fund and finance a new electric bus fleet for the city of Sofia. The Hub is also helping the bus company and the municipality prepare a potential application for ELENA. Similar projects underway in Hungary and France



Circular economy

Market assessment for exploring the viability of creating and structuring an investment platform for the Netherlands Investment Agency. Joint initiative for Circular Economy support, together with NPBs: KfW, CDP, CDC, ICO and BGK

Smart city Investment platforms (CZ, SK, HU, HR)

Several Cohesion Member States have requested support to develop national smart city investment/advorsory platforms, to support smart city projects especially in energy efficiency and renewables



Energy efficiency

Market assessment/structuring and development of model contracts for assignments on Energy Performance Contracts in Slovakia, Slovenia, the Czech Republic; Romania and Poland (including with JASPERS and ELENA)
Financial modelling support for upgrading street lighting of Vilnius

Example: Multi-sector advisory support to facilitating EU, EIB and City own investment - Gdańsk, Poland

EIB has provided advice and financial support across the full spectrum of city investments

- **Urban transport:** tramway system improvement, metropolitan railways and light rail, railway connection to ports, urban roads.
- **Ports:** modernization of breakwaters in the North Harbour in Gdańsk.
- **Culture:** European Solidarity Center.
- **Water and wastewater:** ensuring compliance with the EU environmental acquis and the connection of new users to the sanitary sewage system and storm water protection system in the Bay of Gdańsk.
- **Waste-to-Energy:** construction of a Waste-to-Energy facility.
- **Energy:** Gdańsk-Żydowo-Słupsk power transmission line.
- **Climate Change Adaptation Action plans:** contributing to the screening and identification of priority investments (water and biodiversity sectors).
- **Social Housing:** Supporting prioritization of investment.



European Solidarity Centre



Port of Gdańsk



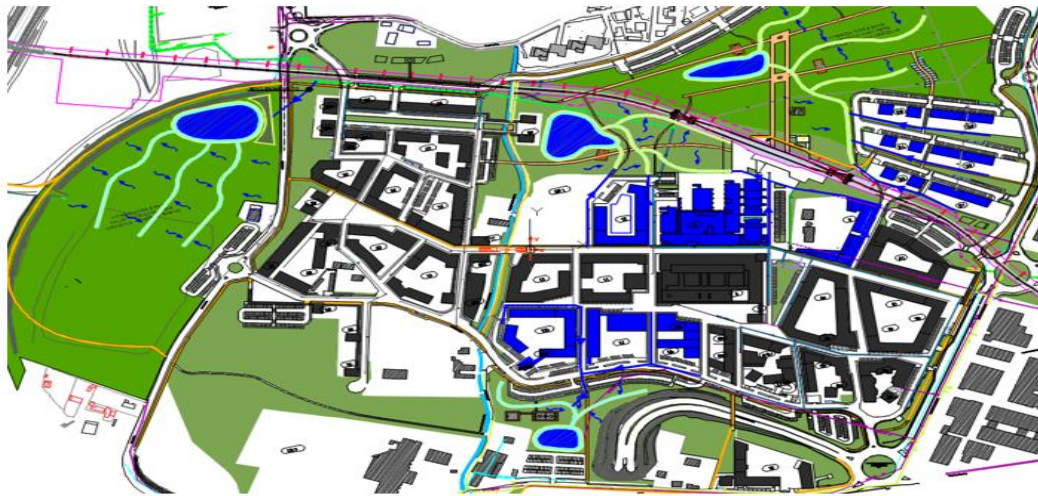
Pomeranian Metropolitan Railways

Project identification and development

Bologna – identifying investments in urban climate adaptation

Value:

- ▶ PJ advisory identified priority investments in climate adaptation
- ▶ Incorporation of investments into FLs
- ▶ Enhance resilience of the schemes selected for allocation
- ▶ Strengthen partnership with the city for potential new operations



water sensitive re-design of green areas



28.000 m³/y available for watering of 9 ha green areas

Upstream and Capacity Building

Poland Social & Affordable Housing Investment Platform – URBIS platform

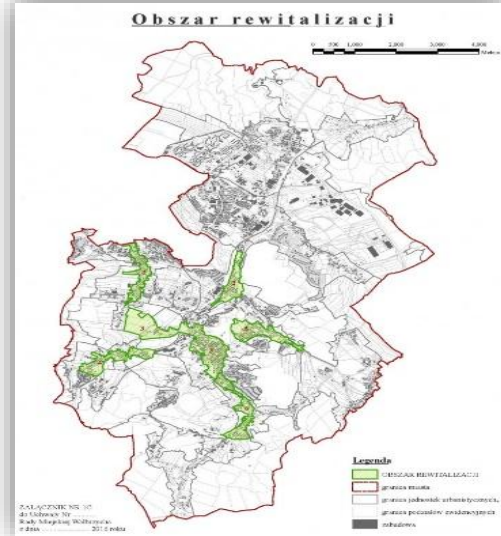
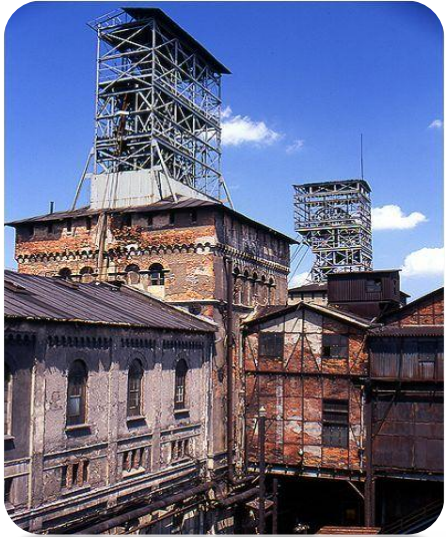
Value:

- ▶ Support a market study and issues analysis on best practice in rent to buy for affordable housing
- ▶ Development of a new investment programme



Just Transition – Industrial Conversion of Cities

Advisory support to Walbrzych



- Wałbrzych has been challenged by mining and heavy industry closure causing very high unemployment (~30%) and depopulation (-20%).
- Walbrzych is successfully starting to shift to modern and innovating industries including automotive.
- City still has housing stock in poor condition and insufficient social and cultural infrastructure poorly located to meet present needs.
- EIB signed a loan for the *Walbrzych Urban Revitalisation Project* of EUR 28m in 2018.
- EIB provides advisory support through URBIS / European Investment Advisory Hub together with LSE - London School of Economics' urban team sharing knowledge of other European cities which have tackled urban industrial reconversion.