

An aerial photograph of a wind farm at sunset. The scene shows a series of rolling green hills with a dirt road winding through them. Numerous white wind turbines are scattered across the landscape, with one in the foreground being particularly prominent. The sky is a mix of orange, yellow, and blue, with a few wispy clouds and a single white contrail from an aircraft. The overall mood is serene and sustainable.

Google

Sustainability at Google

Alexandra Großkurth
Sustainability Lead
Geo Product Partnerships



At Google, we feel a responsibility to lead the transition to a more sustainable future by making information accessible and driving innovation forward.

Environmental Insights Explorer

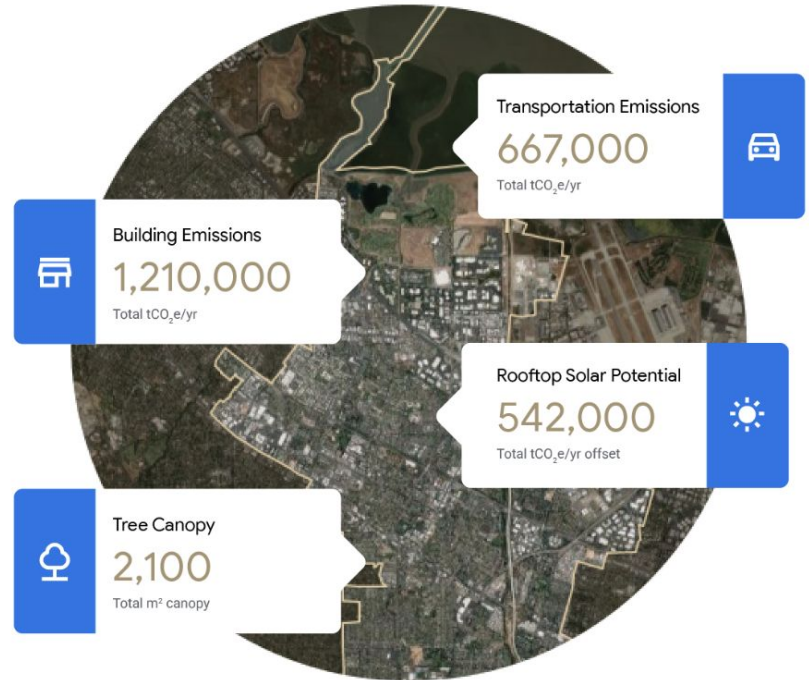
Providing accurate environmental insights to help cities make data-driven decisions.

Learn more and signup at:
<https://insights.sustainability.google>



Environmental Insights Explorer

- Transportation trends
- Tree Canopy
- Estimated solar energy production
- Building emissions



80+ Petabytes

Growing daily

1 Petabyte

Monthly growth rate

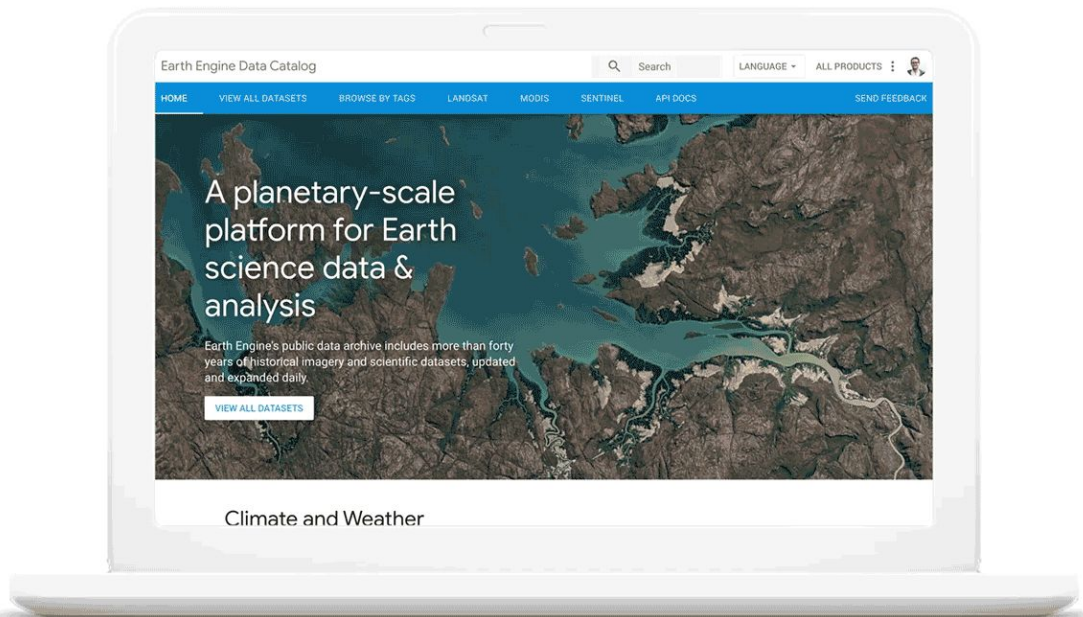
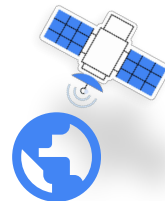
1,000+

Curated datasets

Continuously updated in near real-time

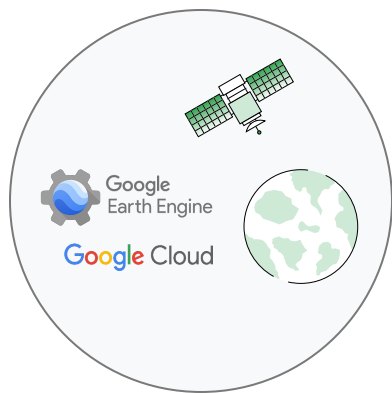


Google Earth Engine

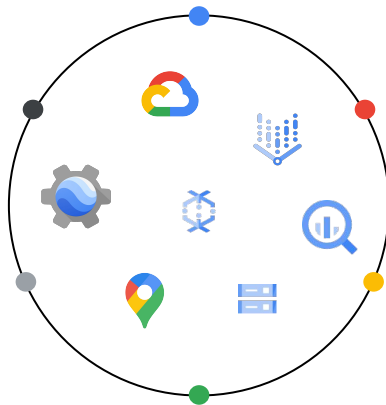


Learn more: developers.google.com/earth-engine/

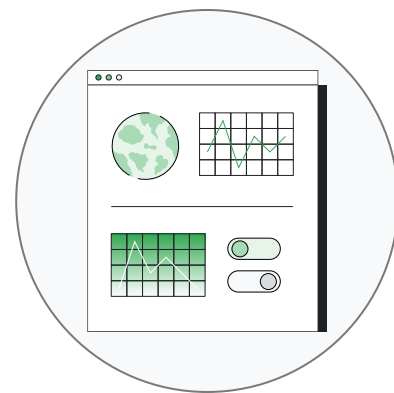
Answering complex sustainability questions



Google Earth Engine aggregates and harmonizes planetary data from multiple sources including customer data



Users apply climate data science and machine learning turning pixels into insights



Deliver insights that can be analyzed, reported and visualized

Flood forecasting

Accurate real-time flood forecasting and alerts

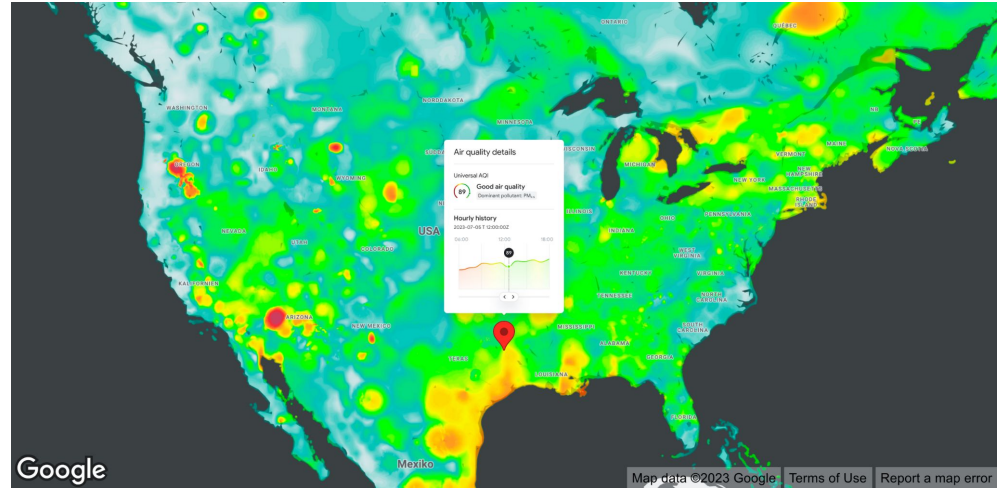


Wildfire Mapping

wildfire boundary tracker uses AI and satellite imagery to map large fires in close to real-time.



Reporting Air Quality



Actionable Recommendations
Hourly history
Pollutant details
Predictions [coming soon]

Learn more: [Google Maps Environment APIs](#)



Google

Thank you.

Learn more at sustainability.google

A view of our planet from Google Earth ©2020 Landsat/Copernicus